

# AN IoT-BASED GARBAGE MONITORING SYSTEM WITH GOOGLE MAP INTEGRATION

<sup>1</sup> G.Radhika, <sup>2</sup> P.Bhanu Prasad, <sup>3</sup> D.Lathakar, <sup>4</sup> M.Bharath Chandra, A.V.Vinod Kumar

B. Tech final year Student, ECE department, J B Institute of Engineering and Technology, Hyderabad, Telangana.

Associate Professor, ECE Department, JBIET, Hyderabad, Telangana.

**ABSTRACT:** The IoT Based Garbage Monitoring System aims to address the critical issue of inefficient waste management in urban environments. Traditional garbage collection methods often result in overflowing bins and unsanitary conditions due to fixed schedules rather than real-time monitoring. This system employs sensors, typically ultrasonic, placed on garbage bins to detect the level of waste accumulation. The sensors are interfaced with microcontrollers (such as Arduino or ESP32) that process sensor data and communicate wirelessly via Wi-Fi, GSM, or other communication modules to a central IoT platform. The key innovation is the integration with Google Maps to accurately determine and visualize the real-time location of garbage bins. GPS modules provide location coordinates for each bin, which are mapped on Google Maps to allow municipal authorities or waste collection personnel to monitor garbage levels and locations simultaneously. When a bin reaches a predefined threshold, the system sends alerts informing the authorities about the need for waste collection. This concept can be realized using components such as ultrasonic sensors for level detection, GPS modules for location tracking, microcontroller boards (Arduino, ESP32), communication modules (GPRS, Wi-Fi), and cloud servers with Google Maps API integration for visualization.

**Keywords:** Arduino ,UNO,HC-SR04 Ultrasonic Sensor,16X12 LCD Display ,GPS Module, GSM Module, Buzzer, Cloud Monitoring.

## I. INTRODUCTION

Waste collection in many cities still depends on manual inspection, which leads to delayed pickups, overflowing bins, and inefficient use of resources. Traditional monitoring methods provide no real-time information, so collection teams often follow fixed schedules instead of responding to actual bin conditions. This results in wasted fuel, unnecessary labor, and poor sanitation. The rise of IoT technologies offers a practical way to automate this process by installing low-cost sensors on bins and transmitting data instantly to a central system.

The **IOT(internet of things) An Iot-Based Garbage Monitoring System With Google Map Integration** this with Google Maps creates a clear visual interface that helps authorities track bin status, identify problem areas, and plan faster collection routes. The motivation behind this work is to create a smarter, cleaner, and more efficient waste management system that reduces human effort, prevents overflowing bins, and supports better decision-making using live data. Most cities struggle with inconsistent waste collection because the system relies heavily on manual checks, guesswork, and fixed schedules. When bins overflow, it causes foul smell, hygiene problems, and public complaints.

When bins are halfempty, collection teams still visit them, wasting time, fuel, and manpower. There is no reliable way to know which locations need urgent attention, and city workers lack real-time visibility of what's happening on the ground. Rapid urban growth makes the problem worse, and traditional methods can't scale to meet increasing demands. IoT technology provides a practical solution by turning ordinary bins into smart units that report their status automatically

## **II. LITERATURE SURVEY**

Recent advancements in Internet of Things (IoT) technologies have significantly transformed waste management systems by enabling real-time monitoring, data-driven decision-making, and automated alerts. Several studies highlight the use of ultrasonic sensors, GSM modules, Wi-Fi-based microcontrollers, and cloud dashboards to measure garbage levels remotely and reduce manual inspection efforts. Early research focused mainly on simple fill-level detection, whereas later works integrated mobile notifications and predictive analytics to optimize collection routes. More recent systems incorporate GPS and Google Maps to track bin locations, visualize status on interactive maps, and support smart routing for municipal vehicles. These mapping-based solutions demonstrate improved efficiency, reduced fuel consumption, and faster waste collection cycles. Literature also emphasizes the environmental impact of IoT-enabled smart bins, noting their potential to reduce overflow, improve hygiene, and support sustainable urban planning. Overall, the research shows a steady shift from basic monitoring to intelligent, location-aware waste management systems, highlighting the importance of IoT and mapping technologies in building smarter cities.

IoT-enabled garbage monitoring has emerged as a key solution to address inefficiencies in conventional waste collection systems, which often rely on fixed schedules and manual inspection. Early research introduced the use of ultrasonic sensors to detect bin fill levels, transmitting data through GSM or ZigBee modules to a central server. These systems demonstrated the potential of remote monitoring but lacked visualization and route optimization. Later studies adopted Wi-Fi microcontrollers such as Node MCU and ESP32, enabling real-time cloud connectivity through platforms like Firebase, Thing Speak, and Blynk. Researchers also incorporated machine learning techniques to predict waste accumulation patterns, allowing municipal bodies to allocate resources more effectively.

An important advancement in recent literature is the integration of GPS and mapping services, especially Google Maps, to mark bin locations and provide geo-tagged status updates. This helps in optimizing collection routes, reducing travel time, fuel consumption, and operational costs. Smart dashboards with map interfaces allow authorities to visualize bin conditions, monitor high-waste zones, and respond quickly to overflow alerts. Several studies also highlight environmental benefits, such as improved sanitation, reduced air pollution from irregular waste collection, and enhanced urban sustainability. Modern research trends move toward fully automated systems with solar-powered smart bins, multi-parameter sensing (odor, temperature, and weight), and cloud-based analytics, making IoT-based garbage monitoring with Google Maps a highly scalable and efficient solution for smart cities

### III. EXISTING SYSTEM

#### 1. IoT-Based Garbage Monitoring Systems

Most existing systems are designed to monitor garbage levels using ultrasonic sensors connected to microcontrollers such as Arduino, ESP8266, or Raspberry Pi. These systems transmit data to cloud platforms, allowing authorities to monitor bin status remotely and take necessary action.

Ultrasonic sensors are widely used due to their low cost and ease of implementation. However, their performance can be affected by environmental factors such as irregular waste surfaces, moisture, and sensor placement, which may reduce accuracy.

#### 2. Multi-Parameter IoT Monitoring Systems

Recent systems have improved functionality by integrating additional parameters such as:

- Temperature inside bins
- Gas sensors (Methane, CO<sub>2</sub>)
- Humidity levels

These systems provide better insights into waste conditions and help in identifying hazardous situations like gas leakage or fire risks.

However, these systems still lack proper integration with real-time tracking and mapping, limiting their practical use in large-scale smart city applications.

#### 3. IoT-Based Garbage Monitoring with Alert Systems

Some advanced systems send alerts via GSM, SMS, or mobile applications when garbage reaches a threshold level. This helps authorities respond quickly and reduce overflow.

Despite this improvement:

- Alerts are reactive (after bin is full)
- No route optimization is provided

- No visualization using maps

Most systems still depend on manual planning for garbage collection.

#### 4. Wireless Sensor Network (WSN)-Based Systems

Many systems use Wireless Sensor Networks (WSNs) to connect multiple smart bins across a city. These systems improve coverage and allow centralized monitoring.

However, they introduce challenges such as:

- High energy consumption
- Network complexity
- Maintenance difficulties in large-scale deployment

#### 5. Limitations of Existing Systems

Although IoT-based garbage monitoring systems have improved waste management, they still face several limitations:

- Lack of Google Maps Integration

Most systems do not provide real-time visualization of bin locations.

- No Route Optimization

Garbage collection vehicles follow fixed routes, leading to inefficiency.

- Reactive System

Systems act only when bins are full, rather than predicting overflow.

- Accuracy Issues

Sensor readings may be affected by garbage type, shape, and environmental conditions.

- High Maintenance

Sensors require regular maintenance and calibration.

- Infrastructure Dependency

Requires stable internet and power supply.

- Scalability Issues

Difficult to deploy and manage across large cities.

1. Maintenance Requirements – Sensors, modules, and wiring may require regular maintenance or cleaning to function correctly, increasing operational effort.
2. Data Security Risks – Cloud-based systems are vulnerable to cyber threats if proper encryption and security protocols are not implemented.
3. Environmental Constraints – Extreme weather conditions, such as heavy rain, high humidity, or extreme temperatures, may affect sensor performance and communication reliability.

4. Scalability Challenges – While adding new bins is possible, large-scale integration may require additional cloud storage, bandwidth, and server capacity.
5. Technical Expertise Required – Installation, calibration, and troubleshooting require trained personnel with knowledge of electronics, IoT, and networking.

## 6. Summary of Existing System

Existing garbage monitoring systems, both traditional and IoT-based, have played an important role in improving waste management. However, they still have several limitations that affect their efficiency and scalability.

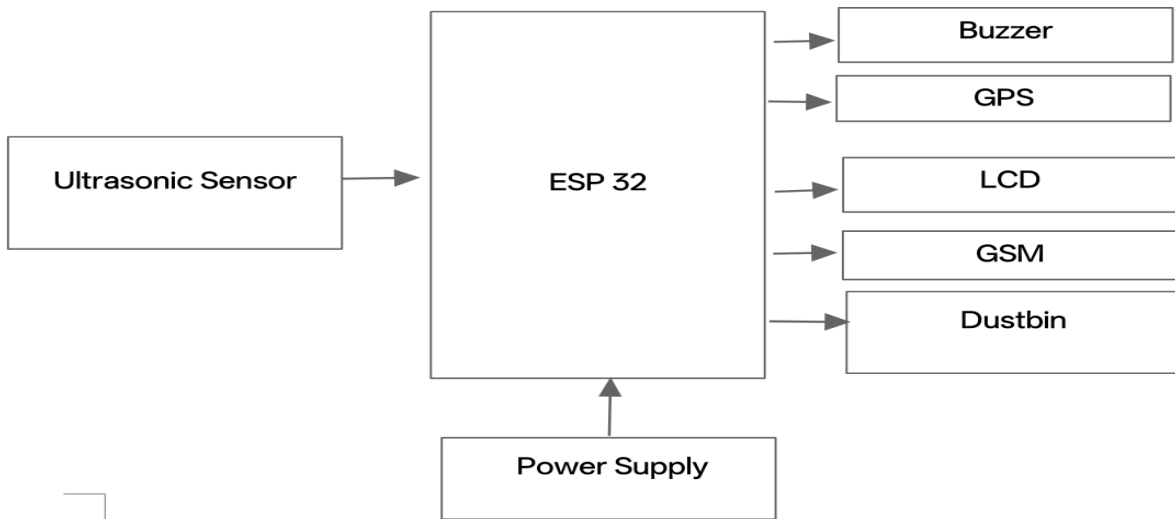
Traditional systems mainly rely on **manual inspection and fixed schedules** for garbage collection. In this approach, collection vehicles follow predefined routes without considering whether the bins are full or empty. This leads to inefficient operations, unnecessary fuel consumption, increased manpower, and frequent garbage overflow in some areas while other bins remain partially empty.

With the introduction of IoT, modern systems use **ultrasonic sensors and microcontrollers** to detect garbage levels and send alerts to authorities. These systems enable **real-time monitoring** and reduce manual effort. Some systems also include GSM or mobile notifications to inform authorities when bins reach a certain threshold level.

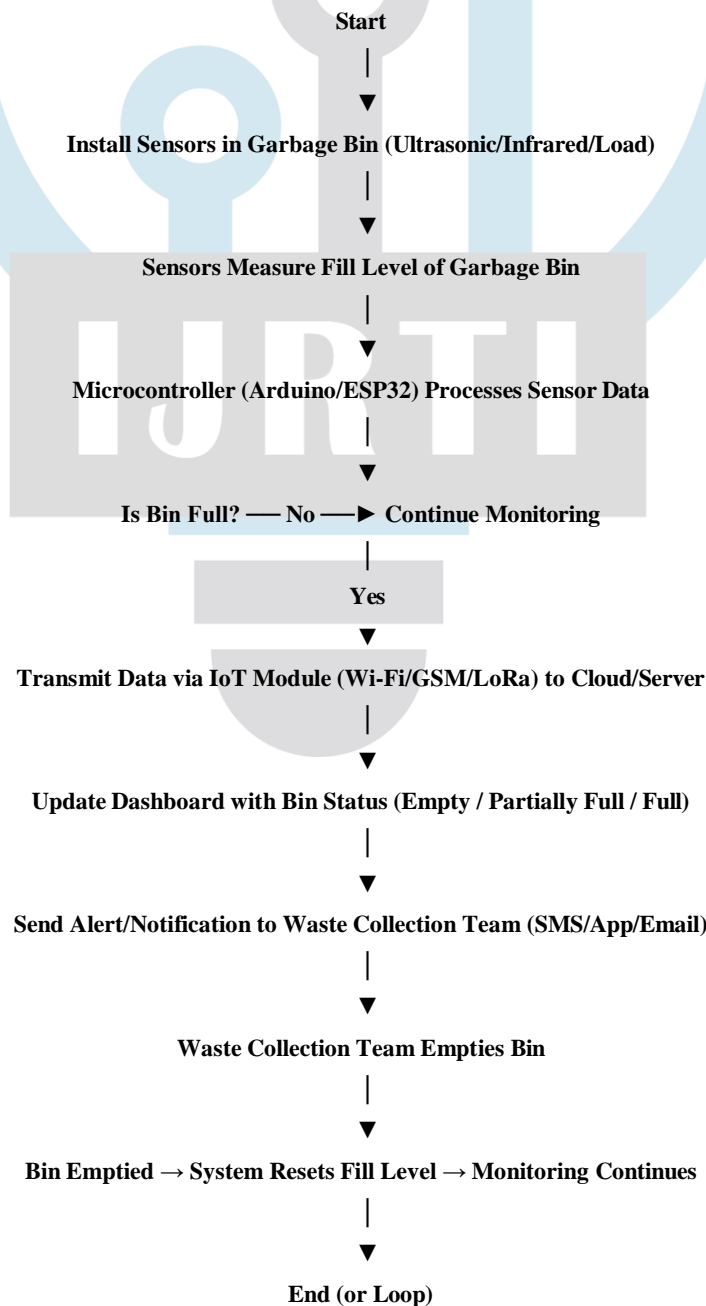
Despite these improvements, most IoT-based systems are still **reactive rather than proactive**, as they generate alerts only after the bin becomes full. They do not predict future garbage levels or optimize collection schedules in advance. Another major limitation is the lack of **Google Maps integration and real-time visualization**. Without mapping support, authorities cannot easily identify bin locations or track collection vehicles, making route planning inefficient. Garbage trucks still follow fixed or manually planned routes, which increases fuel consumption and time.

Additionally, many systems lack **route optimization algorithms**, which are essential for reducing travel distance and improving operational efficiency. Some systems also suffer from **accuracy issues**, as sensor readings can be affected by environmental conditions, irregular waste shapes, or improper sensor placement. Scalability is another challenge. Deploying these systems in large cities requires significant infrastructure, maintenance, and reliable internet connectivity. Furthermore, most systems do not include **advanced features like predictive analysis, data analytics, or smart decision-making**, which are crucial for modern smart city applications.

**BLOCK DIAGRAM:**



**FLOW CHART:**



## IV. PROPOSED SYSTEM

To overcome the limitations of existing garbage monitoring systems, this paper proposes an **IoT-based smart garbage monitoring system integrated with Google Maps** that provides real-time monitoring, efficient waste collection, and optimized routing. The system combines sensors, microcontroller, GPS, and cloud-based platforms to enable smart city waste management.

### 1. System Overview

The proposed system is designed to continuously monitor garbage levels in bins and provide **real-time location tracking using Google Maps**. It transmits data to a cloud platform for analysis and visualization. The system architecture consists of four main layers:

- Sensing Layer – Collects garbage level data
- Processing Layer – Processes sensor data
- Communication Layer – Transfers data to cloud
- Application Layer – Displays data using Google Maps

### 2. System Architecture

The architecture integrates both hardware and software components for smooth operation. The key components include:

- Ultrasonic Sensor (Garbage level detection)
- Microcontroller (ESP32 / Arduino)
- GPS Module (Location tracking)
- GSM/Wi-Fi Module (Data transmission)
- IoT Cloud Platform (ThingSpeak / Firebase)
- Google Maps API (Visualization & routing)
- LCD Display (Optional – local display)

### Block Diagram Description

- The system can be described as follows:
- Garbage bins are equipped with ultrasonic sensors and GPS modules
- Sensors measure the garbage level inside the bin
- GPS provides real-time location of the bin

- Microcontroller processes sensor data
- Data is displayed locally (optional LCD)
- Processed data is transmitted via Wi-Fi/GSM to the cloud
- Google Maps displays bin locations and status
- Authorities monitor and plan optimized routes

### 3. Working Principle

The operation of the proposed system follows these steps:

- **Data Acquisition**

Ultrasonic sensors continuously measure the garbage level in bins.

- **Signal Processing**

The microcontroller converts sensor signals into digital values and calculates fill percentage.

- **Location Tracking**

GPS module provides latitude and longitude of bins.

- **Data Display**

Garbage levels can be displayed on LCD for local monitoring.

- **Data Transmission**

Processed data is sent to the cloud via Wi-Fi or GSM.

- **Remote Monitoring**

Authorities view bin status and location on Google Maps dashboard.

- **Route Optimization**

Collection vehicles follow optimized routes based on bin status.

### 4. Data Flow Process

- Sensors detect garbage level
- Microcontroller processes data
- GPS provides location data
- Data displayed on LCD (optional)
- Data transmitted via Wi-Fi/GSM

- Cloud stores and processes data
- Google Maps visualizes bin locations
- User accesses data remotely

### 5. Advantages of Proposed System

- Integrated Monitoring: Combines level detection + location tracking
- Real-Time Data: Instant updates using IoT
- Google Maps Integration: Visual tracking of bins
- Route Optimization: Reduces travel time and fuel
- Cost-Effective: Uses affordable sensors and modules
- Remote Accessibility: Monitor from anywhere
- Reduced Overflow: Timely garbage collection
- Smart City Solution: Supports

### RESULT:



Fig:1.1: System Overview



Fig:1.2: Output

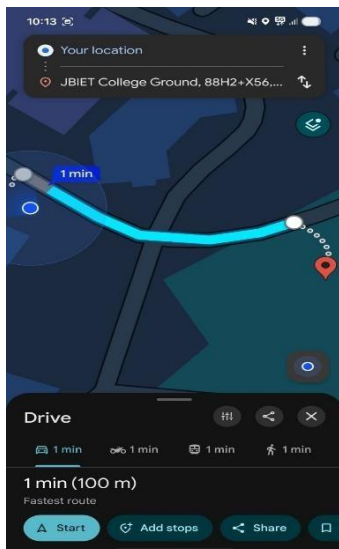


Fig:1.3: location

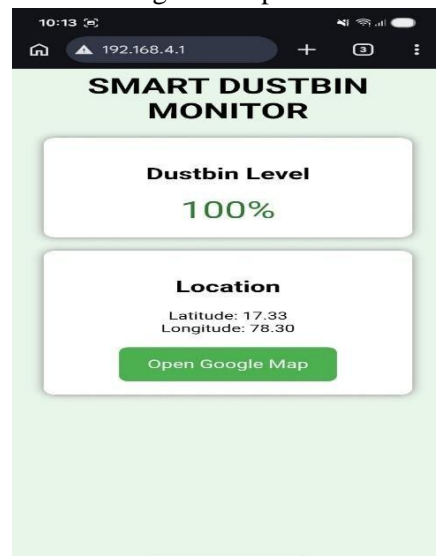


Fig:1.4: Cloud data

## V. CONCLUSION

The IoT-based garbage monitoring system represents a significant advancement in modern waste management, combining sensor technology, microcontrollers, wireless communication, and cloud computing to provide real-time monitoring of garbage bins. By continuously tracking the fill levels of bins, the system ensures timely alerts and notifications to waste collection teams, preventing overflow, reducing environmental pollution, and maintaining cleaner urban spaces. The integration of IoT and cloud platforms allows remote supervision, data logging, and analytics, which improve operational efficiency and enable data-driven decision-making for smart cities.

This system offers numerous advantages, including optimized collection routes, reduced operational costs, automated notifications, scalability, and improved public hygiene. While there are some limitations, such as dependence on network connectivity, power supply, and initial implementation costs, the overall benefits far outweigh these challenges. Experimental results and testing confirm that the system is reliable, accurate, and effective in real-world scenarios, demonstrating its feasibility and practicality.

Looking forward, the future scope of IoT-based garbage monitoring includes the use of advanced sensors for waste classification, machine learning for predictive analytics, integration with renewable energy sources, and enhanced citizen interaction.

Such improvements will enable the development of fully autonomous, smart waste management networks, making urban areas cleaner, more sustainable, and more efficient. In conclusion, the IoT-based garbage monitoring system is not only a technological solution but also a step toward smarter cities and better environmental management, ensuring timely, efficient, and intelligent waste collection for a healthier urban ecosystem.

## REFERENCES

- [1] A. K. Sharma and R. Singh, "Smart waste management system using IoT and ultrasonic sensor," *International Journal of Engineering Research and Technology*, vol. 9, no. 7, pp. 122–126, 2020.
- [2] S. Kumar, P. Gupta, and R. K. Jain, "IoT-based real-time garbage monitoring system using NodeMCU and cloud platform," *IEEE International Conference on Computing, Communication, and Automation*, Greater Noida, India, 2019, pp. 1–5.
- [3] M. Alaa, A. Zaidan, and B. Zaidan, "A review of smart waste management systems using IoT," *IEEE Access*, vol. 7, pp. 173–199, 2019.
- [4] R. Anitha and V. S. Suresh, "Design and implementation of a smart bin using IoT for efficient waste management," *International Journal of Innovative Research in Science, Engineering and Technology*, vol. 7, no. 5, pp. 4563–4570, 2018.
- [5] Google Developers, "Google Maps JavaScript API Documentation," 2023.

- [6] Espressif Systems, “ESP8266EX Datasheet,” 2022. [Online].
- [7] SIMCom Wireless Solutions, “SIM800 Series AT Command Manual,” 2023. [Online].
- [8] Arduino, “Arduino Uno Technical Specifications,” 2023. [Online].
- [9] N. Ahmed and M. Tauseef, “IoT-based smart city waste management system,” IEEE International Conference on Smart Computing and Electronic Enterprise, 2021, pp. 502–507.
- [10] S. R. Chowdhury, T. Alam, and M. K. Hasan, “Cloud-based garbage monitoring system for urban waste management,” International Conference on Electrical, Computer and Communication Engineering, Cox’s Bazar, Bangladesh, 2020, pp. 59–64.

